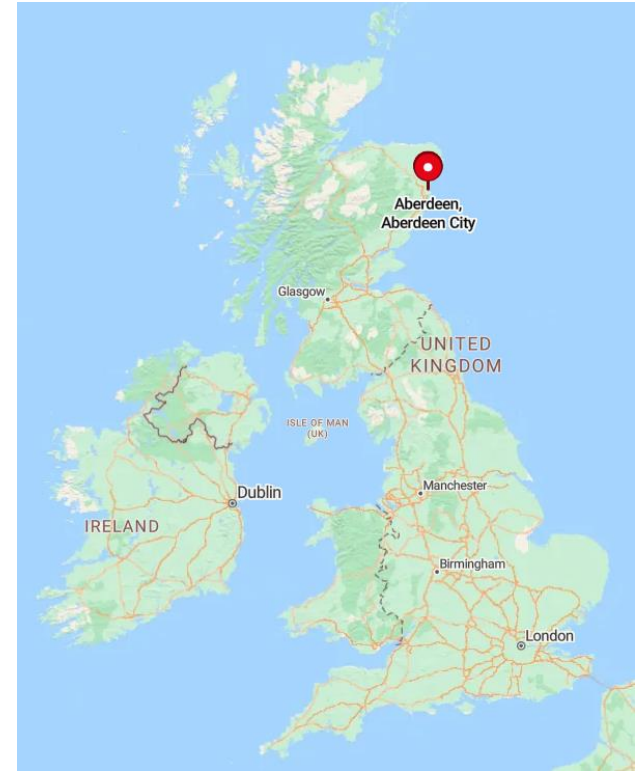


Welcome to the School of Language, Literature, Music and Visual Culture (LLMVC)

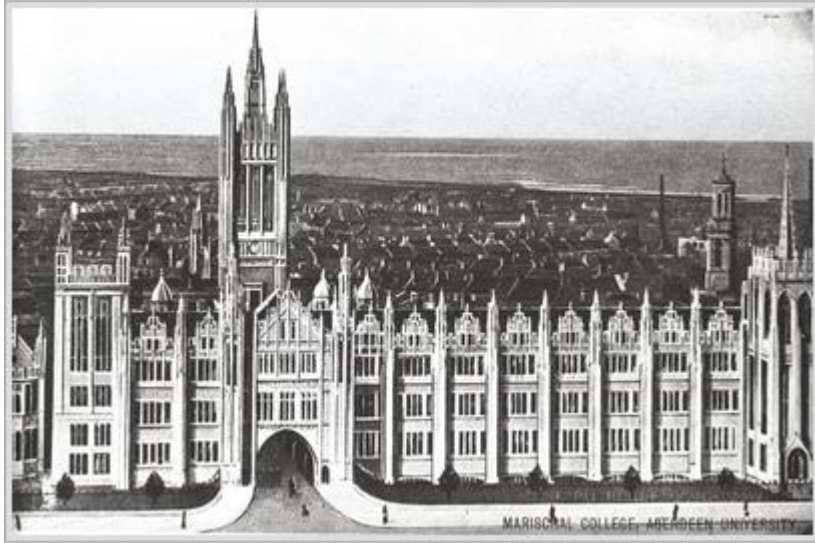
Prof. Chris Collins, Head of School
Dr Zhu Zhu, Internationalisation Lead
23 October 2024

Aberdeen City

- Situated on Scotland's northeast coast.
- Dubbed the "Granite City" or the "Silver City by the Sea" for its gleaming granite buildings against the North Sea backdrop.
- With a rich cultural heritage and vibrant arts scene, showcasing historic landmarks and lively festivals amidst coastal allure and urban charm.
- The "Oil Capital of Europe", a pivotal centre for the oil and gas industry.

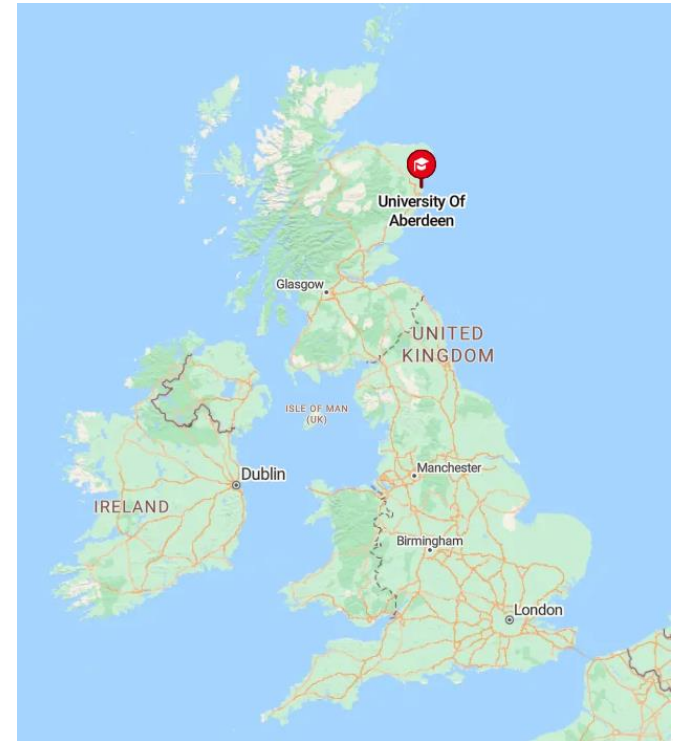


Aberdeen City



University of Aberdeen

- Established in 1495, the UoA is among the oldest English-speaking universities.
- A comprehensive institution, the UoA offers arts, humanities, and sciences at all academic levels.
- Renowned for excellence in teaching and research, the UoA enjoys a prestigious academic standing.



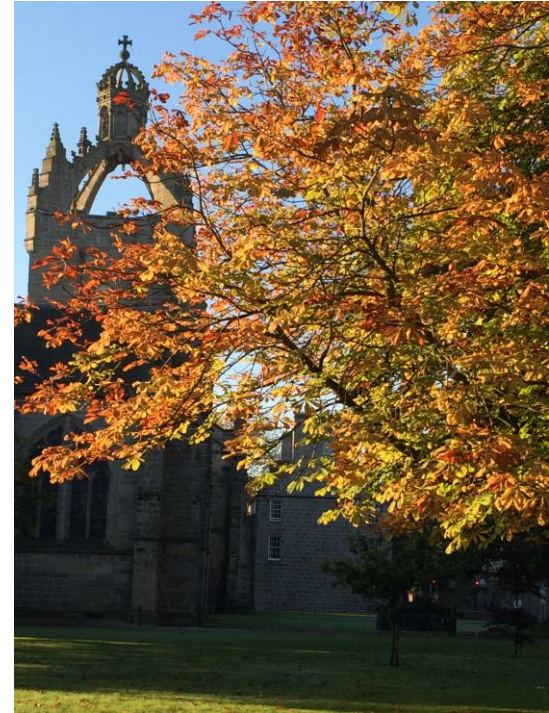
University of Aberdeen



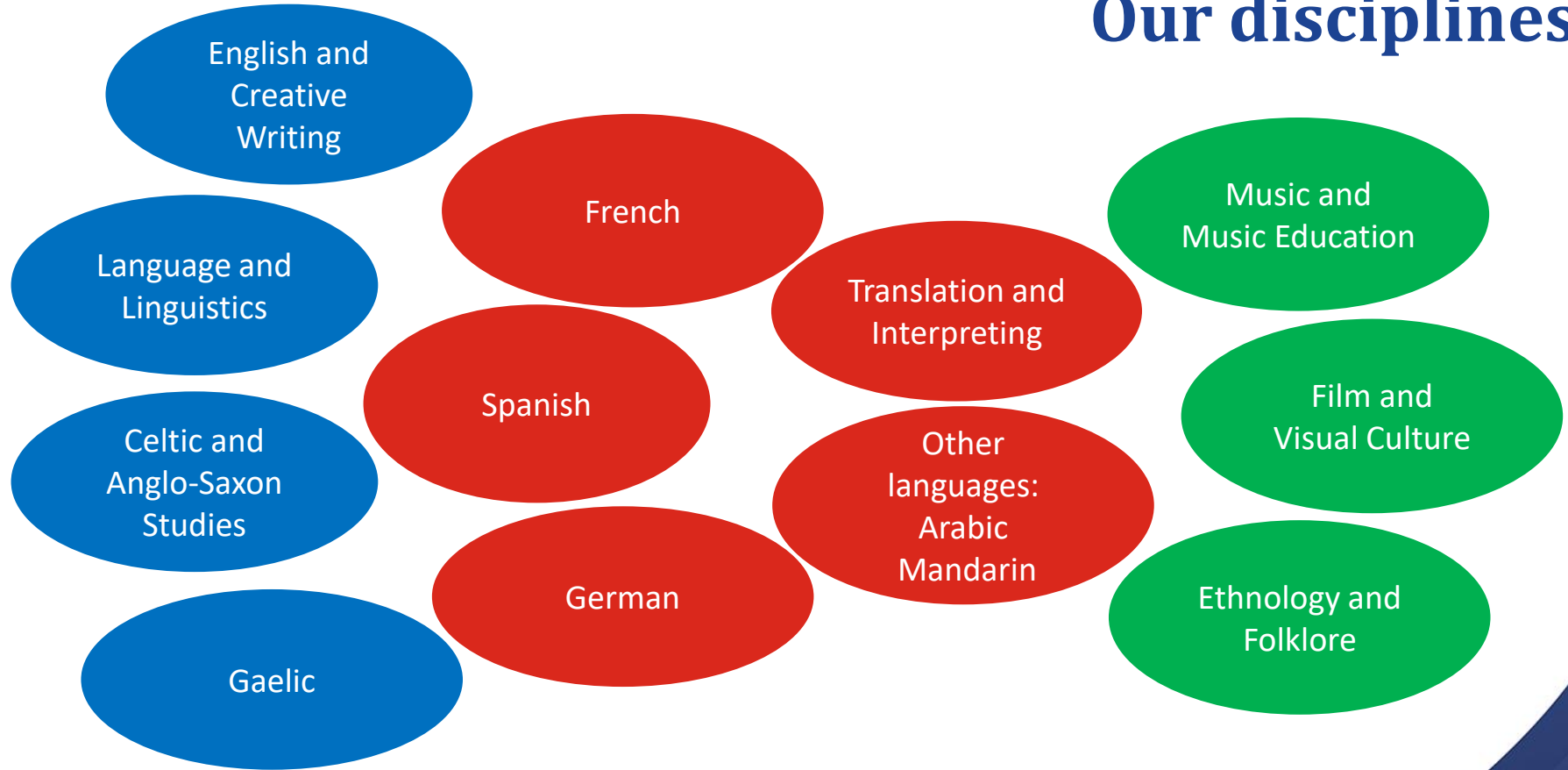
The School of Language, Literature, Music and Visual Culture (LLMVC)

- Around 800 students
- Around 100 staff
- A multidisciplinary and interdisciplinary School
- Excellent facilities, including a performance venue and an Interpreting Suite
- A student-centred School

<https://www.abdn.ac.uk/sll/about/index.php>



Our disciplines



Success

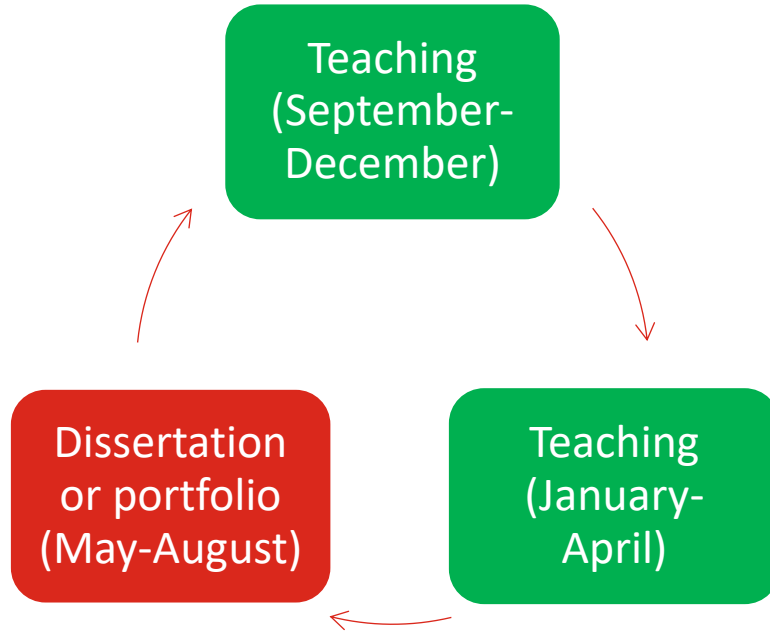


Postgraduate taught degree programmes

- MLitt Creative Writing
- MLitt Comparative Literature (September entry only)
- MLitt English Language and Literature
- MLitt Ethnology and Folklore
- MLitt Film, Visual Culture and Arts Administration
- MLitt Literatures, Environments and Places
- MSc Cultural and Creative Communication
- MSc Global Business Communication
- MSc TESOL (Teaching English to Speakers of Other Languages)
- MSc Translation Studies (September entry only)
- MSc Translating and Interpreting Studies (September entry only)
- MSc Teaching Chinese in A Global Context (starting in 2025-6, September entry only)

<https://www.abdn.ac.uk/sll/degree-programmes/postgraduate-taught-852.php>

Postgraduate taught degree structure



For most programmes,
entry points are available
in September and January

Pathways to Aberdeen

3.5+1

3.5 years in Taiwan

You follow the first 3.5 years of your undergraduate degree at Soochow University



1 year in Scotland

You take a taught postgraduate programme at Aberdeen.

Pathways to Aberdeen

3.5+1

- On successful completion you are awarded **an undergraduate degree from Soochow University** and a **postgraduate degree from Aberdeen**.
- **English requirements for application:** IELTS 6.5 or equivalent. Pre-sessional English courses are available in Aberdeen.
- **Academic requirements for admission:** An average of 75% or above across all undergraduate courses. You may still be admitted if you have one low-workload course remaining at Soochow and are able to finish it remotely from Aberdeen. To receive your PGT degree from Aberdeen, you must have obtained your Soochow degree by the time of the PGT degree awarding and met other standard requirements at Aberdeen.

Pathways to Aberdeen

4+1

4 years in Taiwan

You complete your undergraduate degree at Soochow University



1 year in Scotland

You take a taught postgraduate programme at Aberdeen.

Pathways to Aberdeen

4+1

- On successful completion you are awarded **an undergraduate degree from Soochow University** and a **postgraduate degree from Aberdeen**.
- **English requirements for application:** IELTS 6.5 or equivalent. Pre-sessional English courses are available in Aberdeen.
- **Academic requirements for admission:** An average of 75% or above across all undergraduate courses.

Pathways to Aberdeen

Tuition fee and application portal

- **Every student** participating in these pathways receives either a tuition fee discount equivalent to 23% of the University of Aberdeen's standard fee or a scholarship, whichever is higher. For 2025-2026, the higher amount is approximately £8,000. This amount may vary each year.

For 2025-2026, UoA's standard fee is £23,800. ($£23,800 - £8,000 = £15,800$)

- **How to apply?**
Applications are made through the Aberdeen Postgraduate Admissions Application (PGAP) system. Dedicated staff from the University of Aberdeen will assist students with the application process.
<https://www.abdn.ac.uk/study/postgraduate-taught/apply.php>

More information and frequently asked questions regarding the PGT application:

<https://www.abdn.ac.uk/study/postgraduate-taught/applying-for-a-postgraduate-programme-952.php>

Living in Aberdeen

Cost of living: On average, the total cost, including accommodation and usual living expenses, is around 10,000 pounds.

University accommodation:

- A range of accommodations, located in or close to King's Campus, Hillhead Student Village and the city centre: <https://www.abdn.ac.uk/accommodation/our-accommodation/index.php>
- UoA guarantees all new full-time, full-year students an offer of a single occupancy bedroom within its portfolio of accommodation, either University-owned or with one of its partners, provided the application reaches UoA by the deadline advised and terms and conditions are adhered to.

Student support services, University of Aberdeen, for example:

- Infohub, your one-stop shop for all enquiries: <https://www.abdn.ac.uk/students/support/infohub-6475.php>
- Student Advice & Support Office: <https://www.abdn.ac.uk/students/support/student-advice-support-office.php>
- International Centre: <https://www.abdn.ac.uk/students/support/international-centre-6565.php>

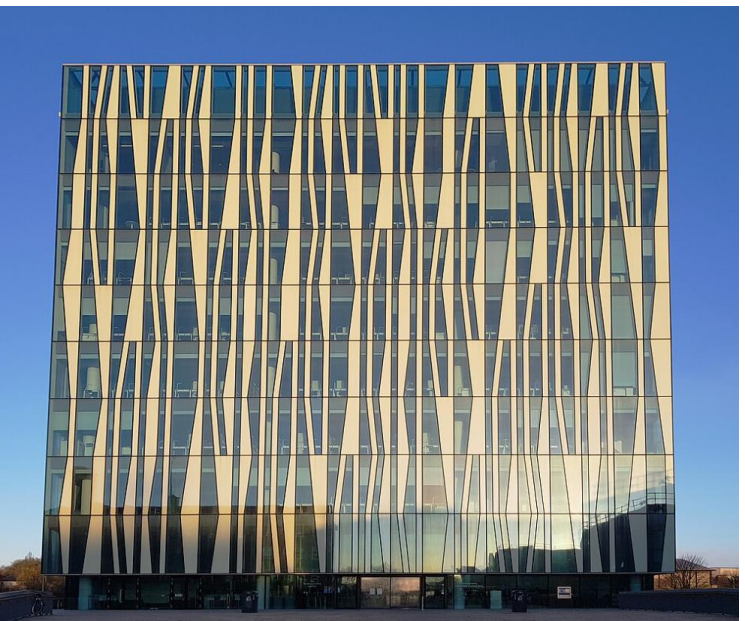
Aberdeen Sports Village

<https://www.aberdeensportsvillage.com/>





High Street, built in 1600s



Sir Duncan Rice Library, completed in 2011

We look forward to welcoming you to Aberdeen!

